

# Grant County

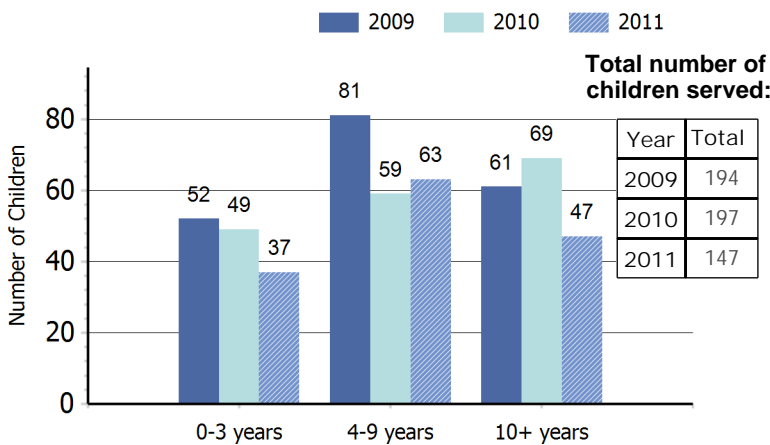
## Profile of Children and Youth with Special Health Care Needs

Population of Children 0-19 Years by Age Group and Year

Age Group	1990	2000	2008	2009
0-4 years	4,861	6,524	7,241	7,404
5-9 years	5,069	6,600	6,690	6,777
10-14 years	4,709	6,719	6,797	6,843
15-19 years	4,237	6,519	7,287	7,310
<b>Total</b>	<b>18,876</b>	<b>26,362</b>	<b>28,015</b>	<b>28,334</b>

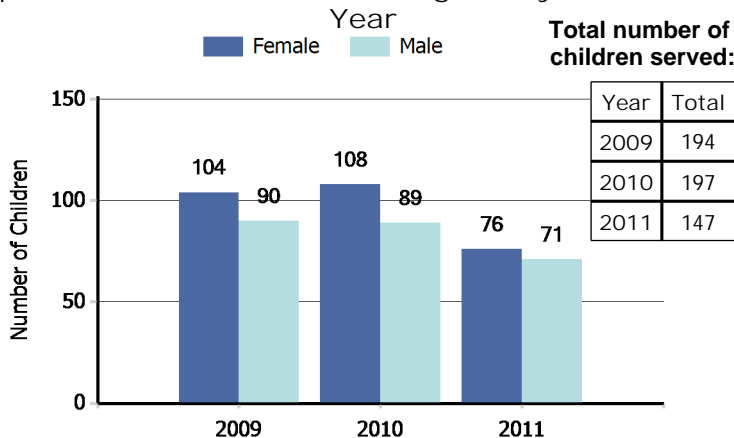
Source: Community Health Assessment Tool (CHAT), 1990-2009 Population Estimates: Population Estimates for Public Health Assessment, Washington State Department of Health and Krupski Consulting, December 2009. Accessed 12/9/11.

Number<sup>1</sup> of Children Served by Children with Special Health Care Needs Program by Age Group and Year



<sup>1</sup>The number of children served by age may not equal the total number of children served due to non-reporting of age for some cases. Source: Child Health Intake Forms, Children with Special Health Care Needs Program, Washington State Department of Health, 5/15/12.

Number<sup>2</sup> of Children Served by Children with Special Health Care Needs Program by Gender and Year

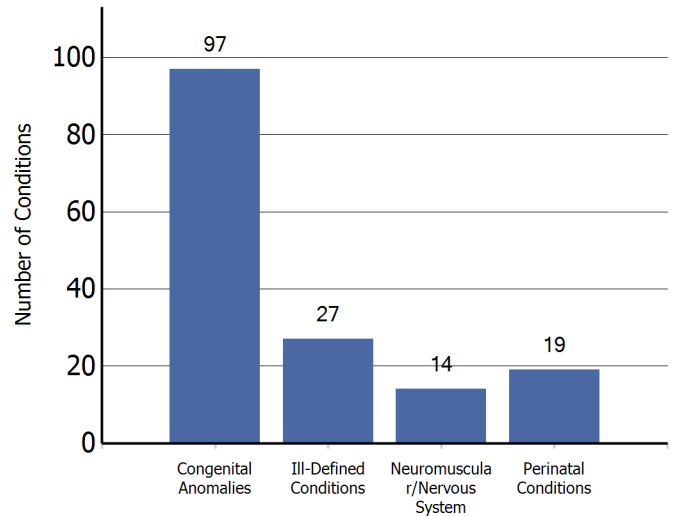


<sup>2</sup>The number of children served by gender may not equal the total number of children served due to non-reporting of gender for some cases. Source: Child Health Intake Forms, Children with Special Health Care Needs Program, Washington State Department of Health, 5/15/12.

*"Children with special health care needs are children who have, or are at increased risk for, chronic physical, developmental, behavioral, or emotional conditions and who also require health and related services of a type or amount beyond that required by children generally."*

(Maternal and Child Health Bureau)

Leading Four Diagnostic Categories<sup>3</sup> among Children Served by the Children with Special Health Care Needs Program: 2011



<sup>3</sup> Child may have multiple conditions.

Source: Child Health Intake Forms, Children with Special Health Care Needs Program, Washington State Department of Health, 5/15/12.

Number of Children in Special Education Services under the Individuals with Disabilities Education Act (IDEA) Part B, as of December 1, 2010

Diagnostic Category	Number
Specific Learning Disability	810
Communication Disorder	453
Developmental Delay - Preschool	366
Health Impairment	239
Intellectual Disabilities	115
Autism	81
Multiple Disabilities	33
Emotional/Behavioral Disability	23
Orthopedic Impairment	20
Hearing Impairment	15
Visual Impairments	11
Traumatic Brain Injury	10
Deaf - Blindness	<5
Deafness	<5
<b>TOTAL</b>	<b>2,176</b>

Source: Office of Superintendent of Public Instruction, Special Education Child County and Placement Data, 1/3/12.

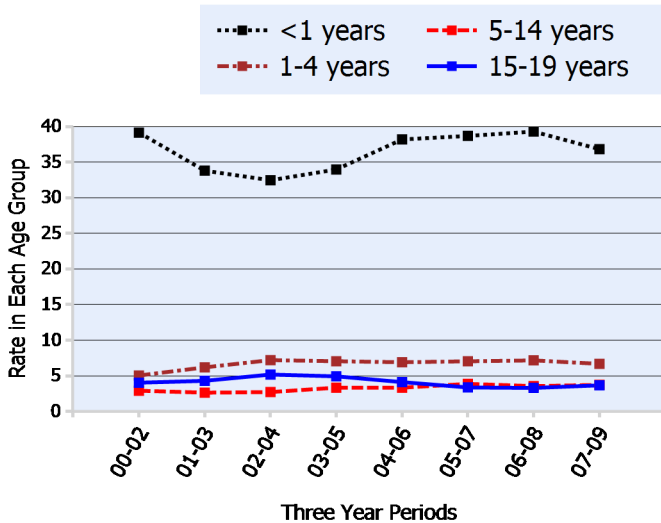
*This county profile is part of the Children and Youth with Special Health Care Needs: Washington State Report. For more information, contact the Children with Special Health Care Needs Program at (360) 236-3571.*

Number<sup>4</sup> of Children Age 0-35 Months with an Individualized Family Service Plan Who Received Early Intervention Services

July 2009 - June 2010	74
July 2010 - June 2011	85

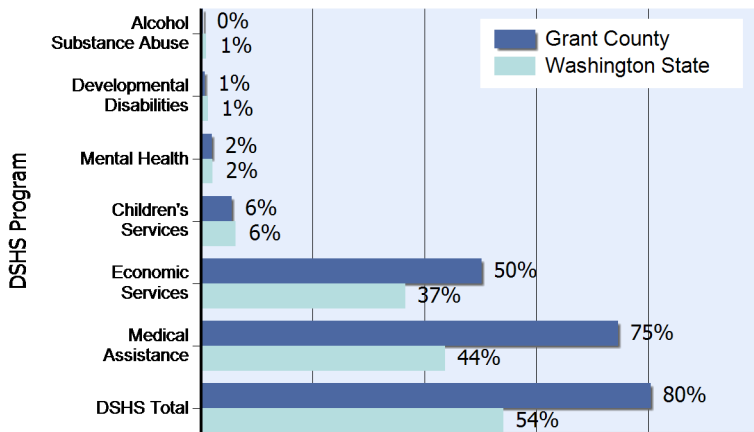
<sup>4</sup>Unduplicated count from Grant County.  
Source: Early Support for Infants and Toddlers (ESIT), Washington State Department of Early Learning, Accessed 11/15/11. Program information and data are available at: <http://www.del.wa.gov/publications/esit/Default.aspx>.

Age-Specific Hospitalization Rate<sup>6</sup> for Chronic Conditions per 1,000 Children Ages 0-19



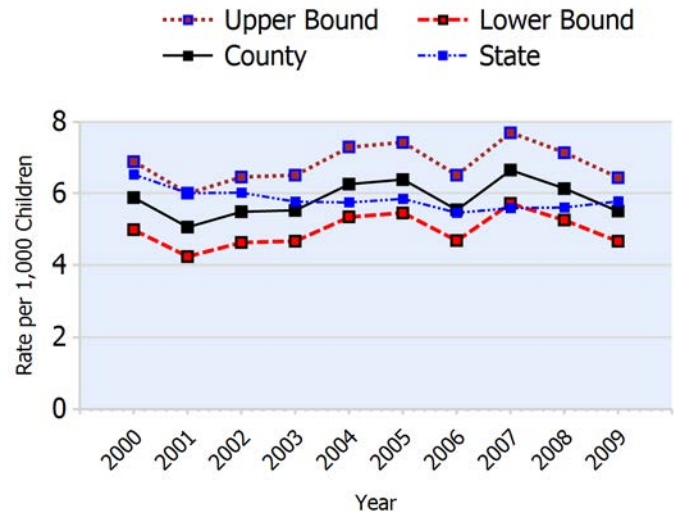
<sup>6</sup> Number of hospitalizations per 1,000 population of children in each age group calculated as three-year rolling averages.  
Source: Community Health Assessment Tool (CHAT), Hospitalization Discharge Data: Comprehensive Hospital Abstract Reporting System (CHARS), Washington State Department of Health, Center for Health Statistics, Accessed 9/21/11.

Percent of Children Age 0-17 in Programs of the Department of Social and Health Services:<sup>7</sup> June 2007 - July 2008



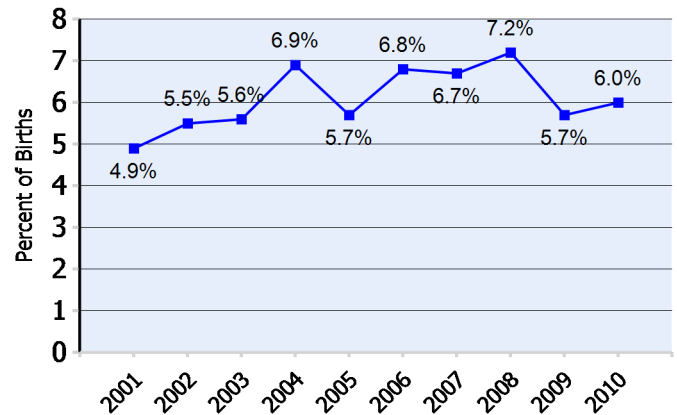
<sup>7</sup>Based upon unduplicated count of children within each service category.  
Source: Client Services Database, Research and Data Analysis Division, Department of Social and Health Services, Accessed 11/15/11.  
Note: In 2010, the Medical Assistance program moved from the Washington State Department of Social and Health Services to the Health Care Authority. Client data and program descriptions are available at <http://clientdata.rda.dshs.wa.gov/>.

Hospitalization Rate<sup>8</sup> for Chronic Conditions per 1,000 Children Age 0-19 Years



<sup>8</sup>Number of hospitalizations per 1,000 population of children 0-19.  
Source: Community Health Assessment Tool (CHAT), Hospitalization Discharge Data: Comprehensive Hospital Abstract Reporting System (CHARS), Washington State Department of Health, Center for Health Statistics, Accessed 9/21/11.

Number and Percent<sup>5</sup> of Babies Born with Low Birth Weight (less than 2,500 grams)



<sup>5</sup> Percent of births for which the birthweight is known.  
Source: Washington State Birth Files, Washington State Department of Health, 11/15/11.

Number of Children 0-17 in DSHS Programs:		Year LBW All Births	
Alcohol Substance Abuse	105	2001	64 1,313
Developmental Disabilities	186	2002	77 1,389
Mental Health	510	2003	80 1,429
Children's Services	1,396	2004	99 1,441
Economic Services	12,679	2005	82 1,451
Medical Assistance	18,828	2006	105 1,549
DSHS Total	20,318	2007	105 1,567
		2008	117 1,635
		2009	92 1,627
		2010	98 1,637

