

Cowlitz County

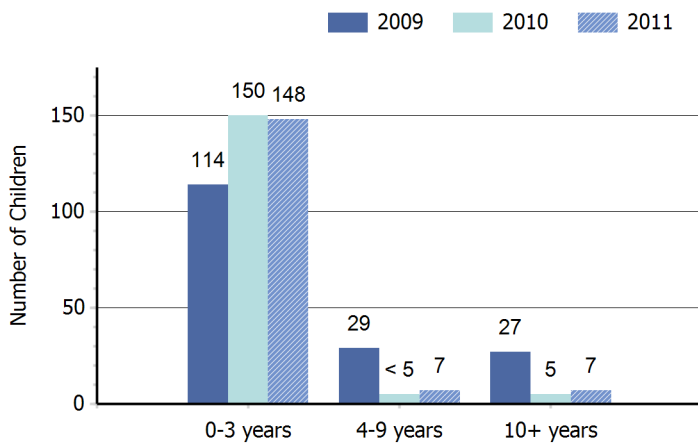
Profile of Children and Youth with Special Health Care Needs

Population of Children 0-19 Years by Age Group and Year

Age Group	1990	2000	2008	2009
0-4 years	6,224	6,203	6,423	6,477
5-9 years	6,439	7,135	6,747	6,740
10-14 years	6,299	7,266	6,853	6,807
15-19 years	5,892	6,824	7,112	7,041
Total	24,854	27,428	27,135	27,065

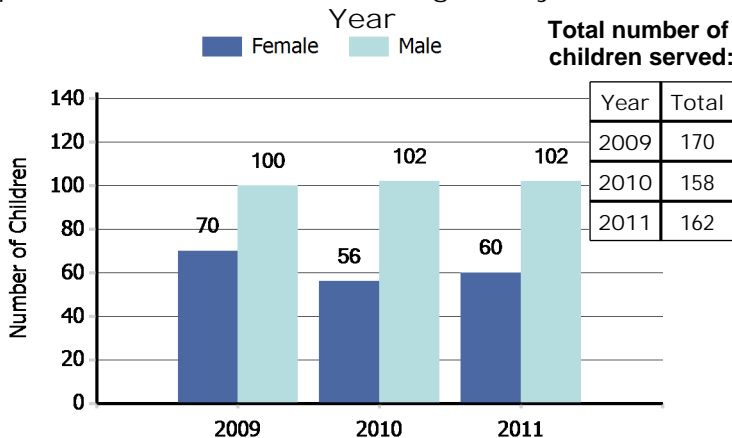
Source: Community Health Assessment Tool (CHAT), 1990-2009 Population Estimates: Population Estimates for Public Health Assessment, Washington State Department of Health and Krupski Consulting, December 2009. Accessed 12/9/11.

Number¹ of Children Served by Children with Special Health Care Needs Program by Age Group and Year



¹The number of children served by age may not equal the total number of children served due to non-reporting of age for some cases. Source: Child Health Intake Forms, Children with Special Health Care Needs Program, Washington State Department of Health, 5/15/12.

Number² of Children Served by Children with Special Health Care Needs Program by Gender and Year

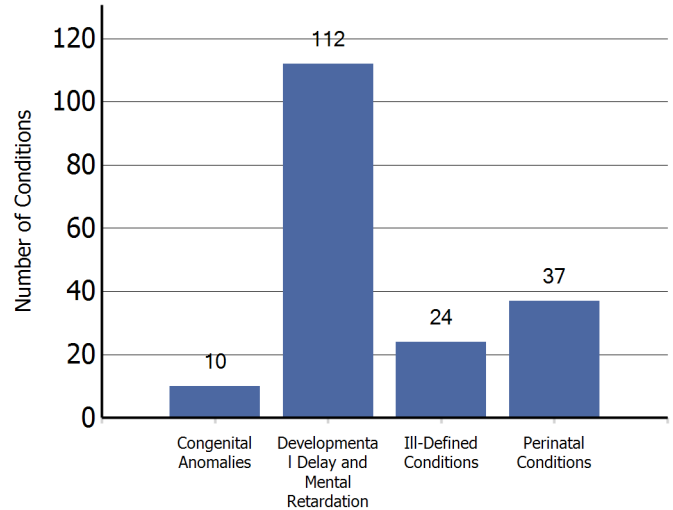


²The number of children served by gender may not equal the total number of children served due to non-reporting of gender for some cases. Source: Child Health Intake Forms, Children with Special Health Care Needs Program, Washington State Department of Health, 5/15/12.

"Children with special health care needs are children who have, or are at increased risk for, chronic physical, developmental, behavioral, or emotional conditions and who also require health and related services of a type or amount beyond that required by children generally."

(Maternal and Child Health Bureau)

Leading Four Diagnostic Categories³ among Children Served by the Children with Special Health Care Needs Program: 2011



³ Child may have multiple conditions.

Source: Child Health Intake Forms, Children with Special Health Care Needs Program, Washington State Department of Health, 5/15/12.

Number of Children in Special Education Services under the Individuals with Disabilities Education Act (IDEA) Part B, as of December 1, 2010

Diagnostic Category	Number
Specific Learning Disability	812
Health Impairment	374
Developmental Delay - Preschool	316
Communication Disorder	283
Autism	138
Emotional/Behavioral Disability	101
Intellectual Disabilities	92
Multiple Disabilities	91
Hearing Impairment	15
Traumatic Brain Injury	7
Deaf - Blindness	<5
Deafness	<5
Orthopedic Impairment	<5
Visual Impairments	<5
TOTAL	2,229

Source: Office of Superintendent of Public Instruction, Special Education Child County and Placement Data, 1/3/12.

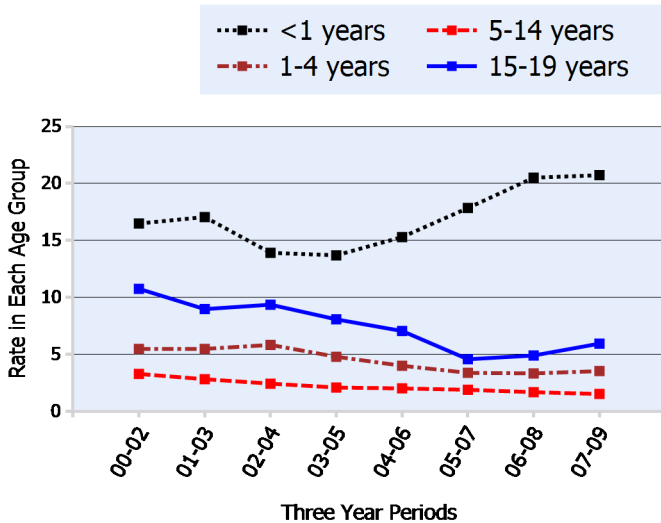
This county profile is part of the Children and Youth with Special Health Care Needs: Washington State Report. For more information, contact the Children with Special Health Care Needs Program at (360) 236-3571.

Number⁴ of Children Age 0-35 Months with an Individualized Family Service Plan Who Received Early Intervention Services

July 2009 - June 2010	88
July 2010 - June 2011	110

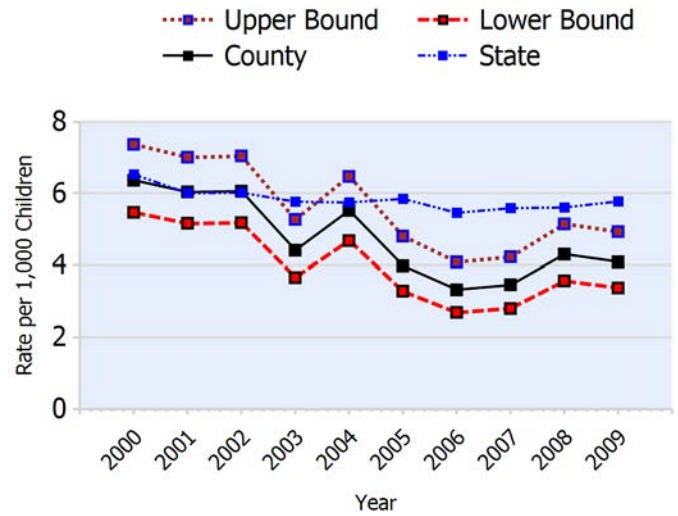
⁴Unduplicated count from Cowlitz and Wahkiakum County.
Source: Early Support for Infants and Toddlers (ESIT), Washington State Department of Early Learning, Accessed 11/15/11. Program information and data are available at: <http://www.del.wa.gov/publications/esit/Default.aspx>.

Age-Specific Hospitalization Rate⁶ for Chronic Conditions per 1,000 Children Ages 0-19



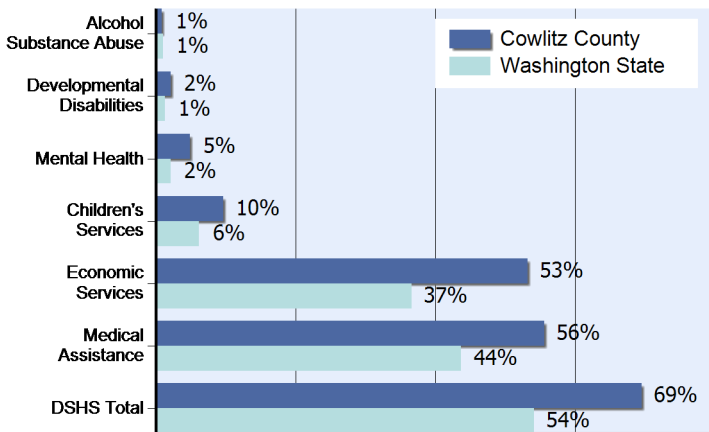
⁶ Number of hospitalizations per 1,000 population of children in each age group calculated as three-year rolling averages.
Source: Community Health Assessment Tool (CHAT), Hospitalization Discharge Data: Comprehensive Hospital Abstract Reporting System (CHARS), Washington State Department of Health, Center for Health Statistics, Accessed 9/21/11.

Hospitalization Rate⁸ for Chronic Conditions per 1,000 Children Age 0-19 Years



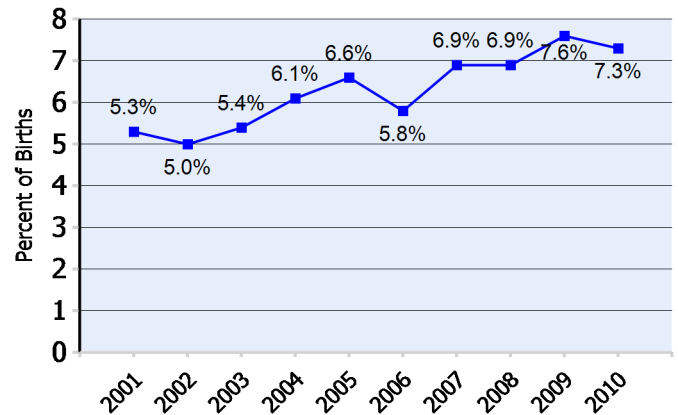
⁸Number of hospitalizations per 1,000 population of children 0-19.
Source: Community Health Assessment Tool (CHAT), Hospitalization Discharge Data: Comprehensive Hospital Abstract Reporting System (CHARS), Washington State Department of Health, Center for Health Statistics, Accessed 9/21/11.

Percent of Children Age 0-17 in Programs of the Department of Social and Health Services:⁷ June 2007 - July 2008



⁷Based upon unduplicated count of children within each service category.
Source: Client Services Database, Research and Data Analysis Division, Department of Social and Health Services, Accessed 11/15/11.
Note: In 2010, the Medical Assistance program moved from the Washington State Department of Social and Health Services to the Health Care Authority. Client data and program descriptions are available at <http://clientdata.rda.dshs.wa.gov/>.

Number and Percent⁵ of Babies Born with Low Birth Weight (less than 2,500 grams)



⁵ Percent of births for which the birthweight is known.
Source: Washington State Birth Files, Washington State Department of Health, 11/15/11.

Number of Children 0-17 in DSHS Programs:		Year	LBW	All Births
Alcohol Substance Abuse	214	2001	65	1,223
Developmental Disabilities	514	2002	60	1,211
Mental Health	1,201	2003	62	1,139
Children's Services	2,383	2004	75	1,227
Economic Services	13,015	2005	82	1,242
Medical Assistance	13,593	2006	77	1,325
DSHS Total	16,988	2007	96	1,382
		2008	92	1,343
		2009	98	1,298
		2010	87	1,193

