

Hood Canal 5

Annual Shellfish Growing Area Review



Prepared By: Scott Chernoff

Area: Hood Canal 5

Year Ending: December 31, 2023

Classification: Approved, Conditionally Approved

Activities in the Growing Area in 2023

The growing area was sampled seven times in accordance with the National Shellfish Sanitation Program (NSSP) Systematic Random Sampling (SRS) criteria. Station 186 in the Conditionally Approved portion was sampled 11 times and eight of these samples were collected in Open Status. The Conditionally Approved portion of the growing area was closed for a total of 48 days due to seasonal water quality (closed September 14 through October 31). The seasonal closure is from May 1 through October 31; however, the reclassification did not become final until September 14. A portion of the growing area including the subtidal area between and including 32960 N Hwy 101 and 33100 N Hwy 101 Bldg 24 in Lilliwaup was closed twice for a total of 42 days due to a sewage discharge. During September, approximately 14 acres near Station 186 were reclassified from Approved to Conditionally Approved due to Station 186 failing the NSSP Approved criteria. The Conditionally Approved portion is in Open Status from November 1 through April 30 and in Closed Status from May 1 through October 31.

Mason County Environmental Health targeted the Lilliwaup portion of the growing area for shoreline evaluations and has begun drafting a Pollution Closure Response Plan for Lilliwaup Cove utilizing local assessment funding. The Mason County Clean Water District continues to meet quarterly.

Analytical Results of Water Samples

Table 1 summarizes the most recent 30 samples collected from each station. All stations in or holding the sanitary lines with Approved areas meet the NSSP standard for an Approved classification.

Change in Actual Pollution Sources that Impact the Growing Area

We currently have no information indicating that the area has new sources of pollution.

Classification Status

- Well within the classification standards
- Meets standards, but threatened with downgrade in classification
- Fails to meet current classification standards

Remarks and Recommendations

All stations meet the applicable NSSP water quality standard and the area is correctly classified.

Management Plan Evaluation

1. Have all parties involved complied with the conditions of the management plan Yes
2. Has reporting been adequate to manage the conditional area Yes
3. Does the area consistently meet approved area criteria when it is open for harvest Yes
4. Has a field inspection of critical pollution sources been conducted Yes

TABLE 1. Summary of Marine Water Data (SRS) for the Hood Canal 5 Growing Area

Sampling Event Type: Regulatory

Maximum Number of Samples: 30

Tides Included: All

Station Number	Classification	Date Range	Range (FC/100mL)	Geomean (FC/100mL)	Est. 90 th Percentile (FC/100mL)	Meets Standard
167	Approved	4/15/2019 - 12/20/2023	1.7 - 70.0	2.5	8.1	Y
169	Approved	4/15/2019 - 12/20/2023	1.7 - 14.0	2.6	6.4	Y
170	Approved	4/15/2019 - 12/20/2023	1.7 - 49.0	2.0	4.7	Y
172	Approved	4/15/2019 - 12/20/2023	1.7 - 22.0	1.9	3.6	Y
173	Approved	4/15/2019 - 12/20/2023	1.7 - 11.0	2.1	4.1	Y
174	Approved	4/15/2019 - 12/20/2023	1.7 - 33.0	2.1	4.8	Y
175	Approved	4/15/2019 - 12/20/2023	1.7 - 79.0	2.9	11.4	Y
176	Approved	4/15/2019 - 12/20/2023	1.7 - 7.8	1.9	3.0	Y
177	Approved	4/15/2019 - 12/20/2023	1.7 - 33.0	2.5	7.6	Y
178	Approved	4/15/2019 - 12/20/2023	1.7 - 49.0	2.4	6.9	Y
179	Approved	4/15/2019 - 12/20/2023	1.7 - 22.0	2.1	4.6	Y
180	Approved	4/15/2019 - 12/20/2023	1.7 - 49.0	2.6	8.9	Y
181	Approved	4/15/2019 - 12/20/2023	1.7 - 13.0	2.3	4.8	Y
182	Approved	4/15/2019 - 12/20/2023	1.7 - 130.0	3.2	15.9	Y
183	Approved	4/15/2019 - 12/20/2023	1.7 - 79.0	2.3	7.0	Y
184	Approved	4/15/2019 - 12/20/2023	1.7 - 110.0	3.1	14.0	Y
185	Approved	4/15/2019 - 12/20/2023	1.7 - 79.0	3.5	16.2	Y
187	Approved	4/15/2019 - 12/20/2023	1.7 - 23.0	3.1	10.2	Y
188	Approved	4/15/2019 - 12/20/2023	1.7 - 49.0	2.6	8.1	Y
189	Approved	4/15/2019 - 12/20/2023	1.7 - 33.0	2.8	7.9	Y
190	Approved	4/15/2019 - 12/20/2023	1.7 - 240.0	2.7	11.4	Y
191	Approved	4/15/2019 - 12/20/2023	1.7 - 49.0	2.8	9.0	Y
193	Approved	4/15/2019 - 12/20/2023	1.7 - 49.0	2.8	9.3	Y
194	Approved	4/15/2019 - 12/20/2023	1.7 - 170.0	2.1	6.4	Y
303	Approved	4/15/2019 - 12/20/2023	1.7 - 240.0	3.0	17.5	Y
310	Approved	4/15/2019 - 12/20/2023	1.7 - 540.0	2.2	8.5	Y
186	Unclassified	10/2/2019 - 12/20/2023	1.7 - 540.0	6.3	47.9	N

The standard for approved shellfish growing waters is fecal coliform geometric mean not greater than 14 organisms/ 100 mL with an estimated 90th percentile not greater than 43 organisms/ 100 mL. The above table shows bacteriological results in relation to program standards.

TABLE 2. Summary of Conditionally Approved Marine Water Data (SRS) in Open Status in the Hood Canal 5 Growing Area

Sampling Event Type: Regulatory

Maximum Number of Samples: 30

Tides Included: All

Includes data from the Open period (May through October)

Station Number	Classification	Date Range	Range (FC/100mL)	Geomean (FC/100mL)	Est. 90 th Percentile (FC/100mL)	Meets Standard
186	Unclassified	4/30/2013 – 12/20/2023	1.7 – 23.0	3.6	11.4	Y

The above table shows bacteriological results in relation to NSSP criteria. NSSP standards for approved shellfish growing waters are a fecal coliform geometric mean not greater than 14 organisms/100 mL and an estimated 90th percentile not greater than 43 organisms/100mL.

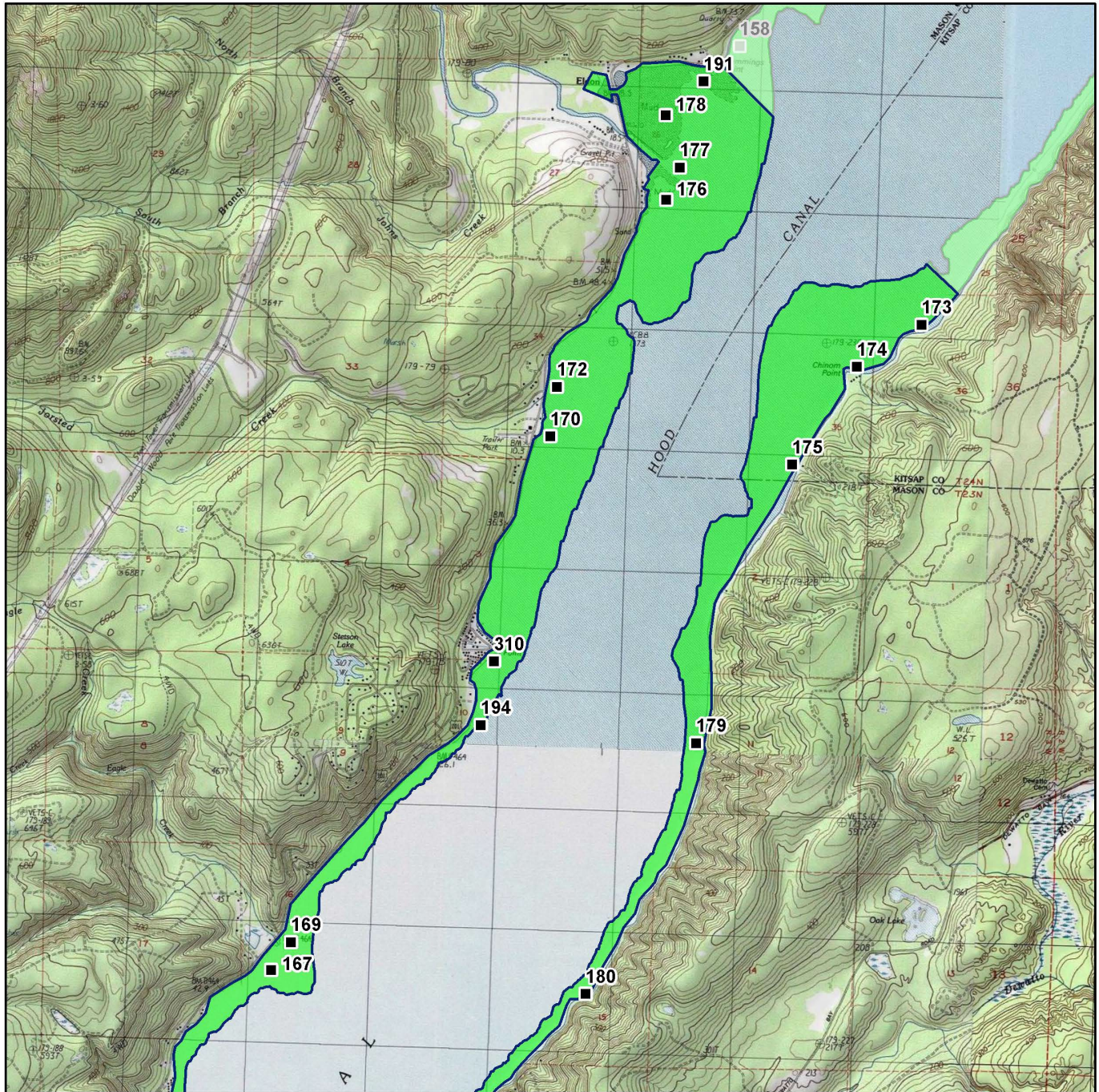
MAP 1. Hood Canal 5 Growing Area (1 of 2)

 Hood Canal #5 (1 of 2)

0 1 2 Miles



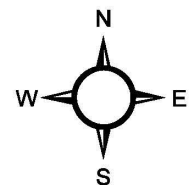
Date Updated: 7/11/2018



Classification

-  Approved
-  Conditional
-  Prohibited
-  Restricted
-  Unclassified

Sampling Stations



* Some sampling stations are highlighted with grey box for ease of reading.

MAP 2. Hood Canal 5 Growing Area (2 of 2)

